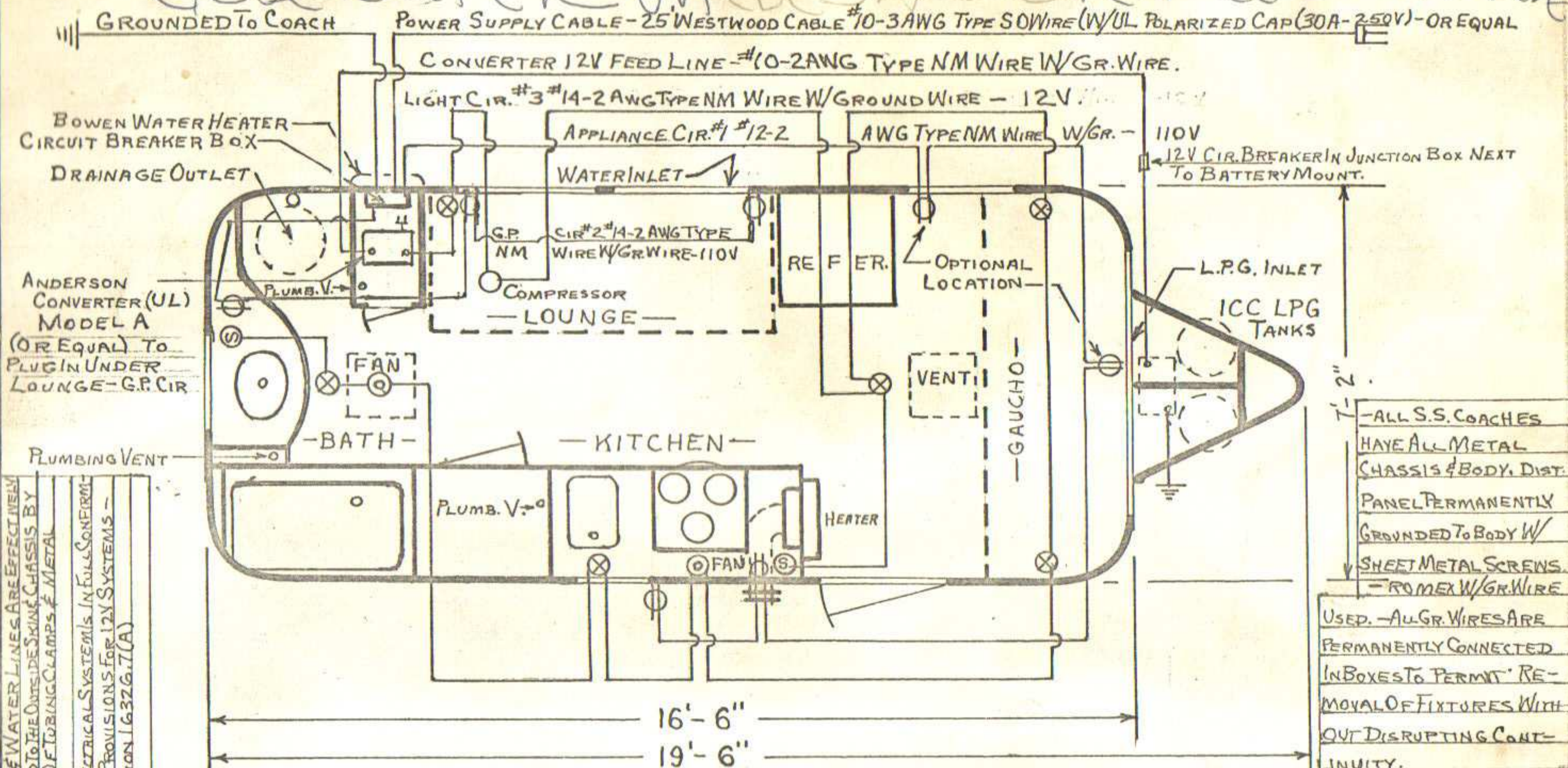
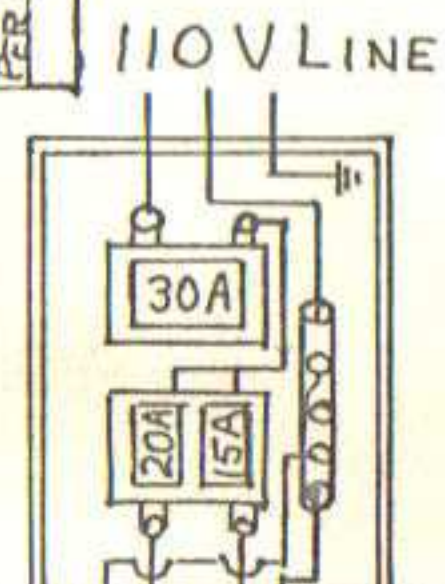


# CLOSE OUTER VALVES AND OPEN CENTER VALVE



BUTANE & WATER LINES ARE EFFECTIVELY GROUNDED TO THE OUTSIDE SKIN CHASSIS BY MEANS OF TUBING CLAMPS & METAL STRAPS  
 COMB. ELECTRICAL SYSTEMS IN FULL CONFORMITY WITH PROVISIONS FOR 12V SYSTEMS - PER SECTION 16326.7(A)



CIR #1 BULLDOG PUSHMATIC ELECTRI-CENTER MODEL PL-2 NIS 40AMP RATING (OR EQUAL)  
 CIR #2

ELECT. TEST EQUIP. USED - IDEAL 41-001-C
TESTER - RATED 500 TO 2500 VOLTS.
<b>ELECTRICAL LOAD</b>
LIGHTING - $16\frac{1}{2} \times 7 = 116 \text{ sq ft}$
$116 \text{ sq ft} \times 3 \text{ WATTS PER sq ft} = 348 \text{ W}$
1 APPLIANCE CIRCUIT = 1500 W
<b>TOTAL LOAD = 1848 W</b>
$1848 \text{ W} \div 120 \text{ V} = 15\frac{1}{2} \text{ AMPS.}$
<b>REQUIRED.</b>

SOLDERLESS PRESSURE CONNECTOR TERMINAL OF ADEQUATE SIZE TO RECEIVE ALL GR. WIRES USED IN DISTRIBUTION PANEL IN LIEU OF BUSS BAR.

SILVER STREAK TRAILER CO.  
 2319 No. CHICO AVE.; EL MONTE, CALIF.

SCALE:  $\frac{3}{8}'' = 1'$       APPROVED BY: \_\_\_\_\_  
 DATE: 7-14-64      DRAWN BY K.E.N.  
 REVISED 9-15-65

**FLOOR PLAN & ELECTRICAL SYSTEM**  
 WIDTH - 7'-2"  
 LENGTH - 19'-6"  
 DRAWING NUMBER  
**MODEL 2.5SC**