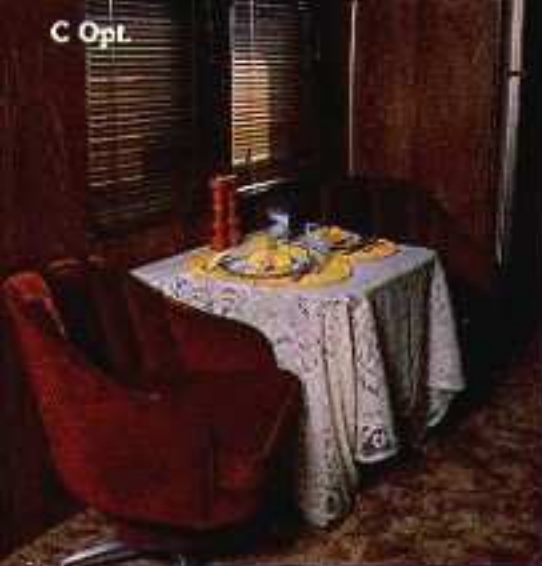




# *Silver Streak*

The Standard of Quality for Over Thirty Years.

C Opt.



TV Opt.



## *Your travel dreams...come true.*

For over 33 years people have entrusted their travel dreams and comforts to SILVER STREAK, knowing that every feature truly represents excellence and precision in craftsmanship, every detail examined to provide maximum livability, and to re-affirm an investment in the most versatile travel home in its class! We feel that is worth your serious consideration.

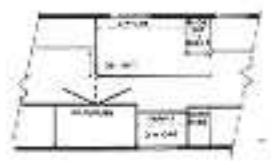
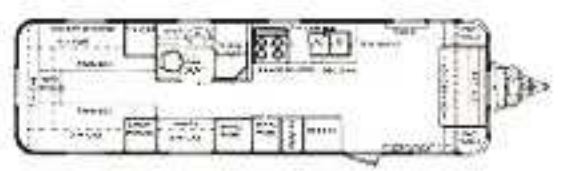
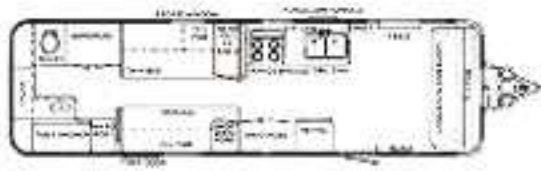
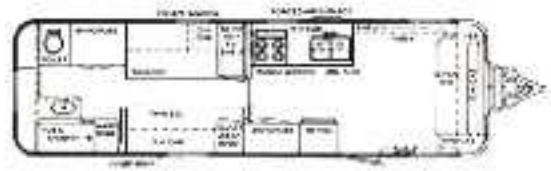
The aircraft construction, in which aluminum roof, ribs, and sidewalls are hand-riveted together is a perfect example of SILVER STREAK'S dedication to lightness and durability. The customer selected interior appointments are travel tested and color coordinated for optimum ease and comfort.

SILVER STREAK has established an unprecedented reputation for service and dependability. But more importantly, SILVER STREAK considers fulfilling your needs as its greatest responsibility; therefore, it is with a tremendous amount of pride that we offer you the opportunity to assist in selecting the living, dining and sleeping accommodations in your SILVER STREAK! Providing for your individual hobbies and lifestyle assures many rewarding years of exciting and luxurious travel!

When it comes right down to it, your happiness and satisfaction is our primary motivation, so select your unique arrangements, protect your travel home investment, and join us NOW in making YOUR TRAVEL DREAMS COME TRUE!



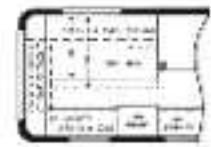
SILVER SIGNATURE SERIES



**2911 R/B**

**3111 R/B**

**3111 C/B**



**3411 R/B**

**Std.**

**Opt.**

**3411 C/B**

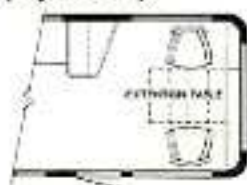
## II (Optional)



## IV (Optional)



## VI (Optional)



## A\* (Std.) Area Saver Nook



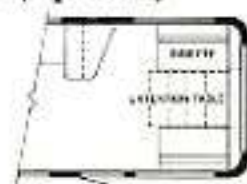
## III (Optional)



## V (Optional)



## VII (Optional)



## B\* Breakfast Nook



## SUPREME STANDARD EQUIPMENT

- Divan Bed w/Storage End Cabinets; TV, Cable, Telephone Jacks, 12V Outlet
- 6 Upholstery Choices
- Livingroom O.H. Cabinets and Side Shelves, Curtain Valance
- Fully Lined Window Drapes/ Slat Blinds
- Anso II Sculptured File Carpet
- Dining Drop Table w/2 Extensions
- Deluxe Wooden Folding Padded Chairs (2)
- Double SS Galley Sinks w/Cutting Board Covers
- Easy Clean Table Tops, Sink Guard, and Splash Panels
- Spice Rack
- Variable Shelving Pantry
- Vented Wardrobes w/Mirrors (2)
- Bedroom Wall Comfort Pad
- Twin (33x78) or Double (48x78) Bed w/Quilted Spread
- Bedrooms Overhead Cabinets w/Reading Lights
- Solid Bathroom Door, Hinged or Sliding w/2 Way Locks
- Built In Laundry Hamper (RB)
- Towel Bar, Soap Dish, Glass Brush + Paper Holders
- Mirrored Medicine Cabinet
- Fiberglass Shower w/Folded Seat, Folding Door (CB)
- Fiberglass Tub/Shower, Folding Door (RB)
- 12V Shower Light

- 12V Outlet in Bathroom
- AM-FM Stereo Radio w/8 Track Tape Deck and 4 Speakers + Aerial
- Aluminum LPG Tanks w/Autom. Regulator, Gauges, + Remote Sending Unit (10 Gal.x2)
- 4 Burner Range w/Low Level Oven + BI Fold Cover (Double Pilot)
- Range Hood w/12V Fan + Light
- Forced Air Furnace w/Wall Thermostat, Elect. Ignition (34,000 BTU)
- Double Door Self-Defrost Gas/Elect. Refrigerator (10 Cu. Ft.)
- Rotary Air Conditioner (113,500 BTU) w/Heat Strip
- Water Heater w/Elect. Ignition (6 Gal./10 Gal. Recovery/Hr.)
- Fresh Water Tank w/Demand Pump (45 Gal.)
- Water Purifier w/ Separate Faucet at Galley
- Water Pressure Regulator
- Wash Water Holding Tank
- Marine Type Toilet w/Holding Tank
- Central Systems Control Panel
- 2 Deep Cycle Batteries w/Box
- 12V Exhaust Fan in Front and Bath Roof Vents
- 12V Fluorescent Lights (7-10)
- 110V Convenience Outlets (6-10)
- Water Proof Outdoor 110V Outlets (2)
- 40 Amp Converter w/Charger and Night Switch in Bedroom
- Digital Clock (Alarm)

- Fire Extinguisher
- Door Chimes
- Tubular Steel Chassis w/C Section Steel Crossmembers
- Tri-Pull Tubular Steel Hitch, 25/16" Coupler
- 12V Power Hatch Jack
- Tandem Axles w/4 Wheel Electric Brakes
- 1655x155T (Load Range C) WW Tires
- 4-Cast Aluminum Wheels
- 4-Shock Absorbers
- 6-Crank Down Stabilizing Jacks (4-2911)
- Aluminum Enclosed Underbelly
- Spare Tire on Steel Wheel (Trunk Mounted)
- Rear Bumper Casters
- Expansive Lockable Rear Trunk
- Enclosed Lockable Sewer Hose Compartment
- Double Folding Entrance Door Step
- Lockable Main Entrance Door w/Built-In Secured Screen/Assist Handle
- Unique Keyed Dead Bolt
- Dual Bulb Running Lights
- 12V Porch Light
- Break-A-Way Switch
- Black Accent, Tinted Windows
- Front Window Aluminum Travel Cover
- Wrap-Around Corner Plexiglas Windows w/Acum. Travel Covers
- Patio Awning, Deluxe Self Retract
- TV Cabinet, Bedroom
- Short Wardrobes, Bedroom

## C\* Chairs with Drop Table



## D\* Desk and Closet



- Swivel Barrel Chairs or Rockers
- Additional O.H. Cabinets (Wide or Narrow)

## OPTIONS AVAILABLE (SEE PRICE LIST FOR SPECIFICS)

- Microwave Oven/Cabinet/Switch (STD-3411)
- Built-in Vacuum Cleaner (110V)
- Built-in Blender (110V)
- Dishwasher

- Window Awnings/Tire Shades
- Storm Windows
- Cassette Tape Player
- Additional Lighting

Arrangements and specifications subject to change without notice.

Optional Selections—(800) 426-4264  
HOUSTON, TEXAS 77004  
PHO. 944-4264

AUTHORIZED DEALER

**Allockley**  
TRAVEL TRAILERS\*

**Silver Streak**  
TRAVEL TRAILERS COMPANY, INC.  
2311 N. Chico Avenue  
South El Monte, CA 91753  
(213) 444-2646 (RS) 6372